








Ksawery: trailhead playground

Change space      

Salesforce Org Models     

Documentation implementation

Production Synced on: March 8, 2021 at 00:01 Ksawery Lisinski Production ● manage


Home Processes Changes **Salesforce Orgs** Ref Models URL Library Releases

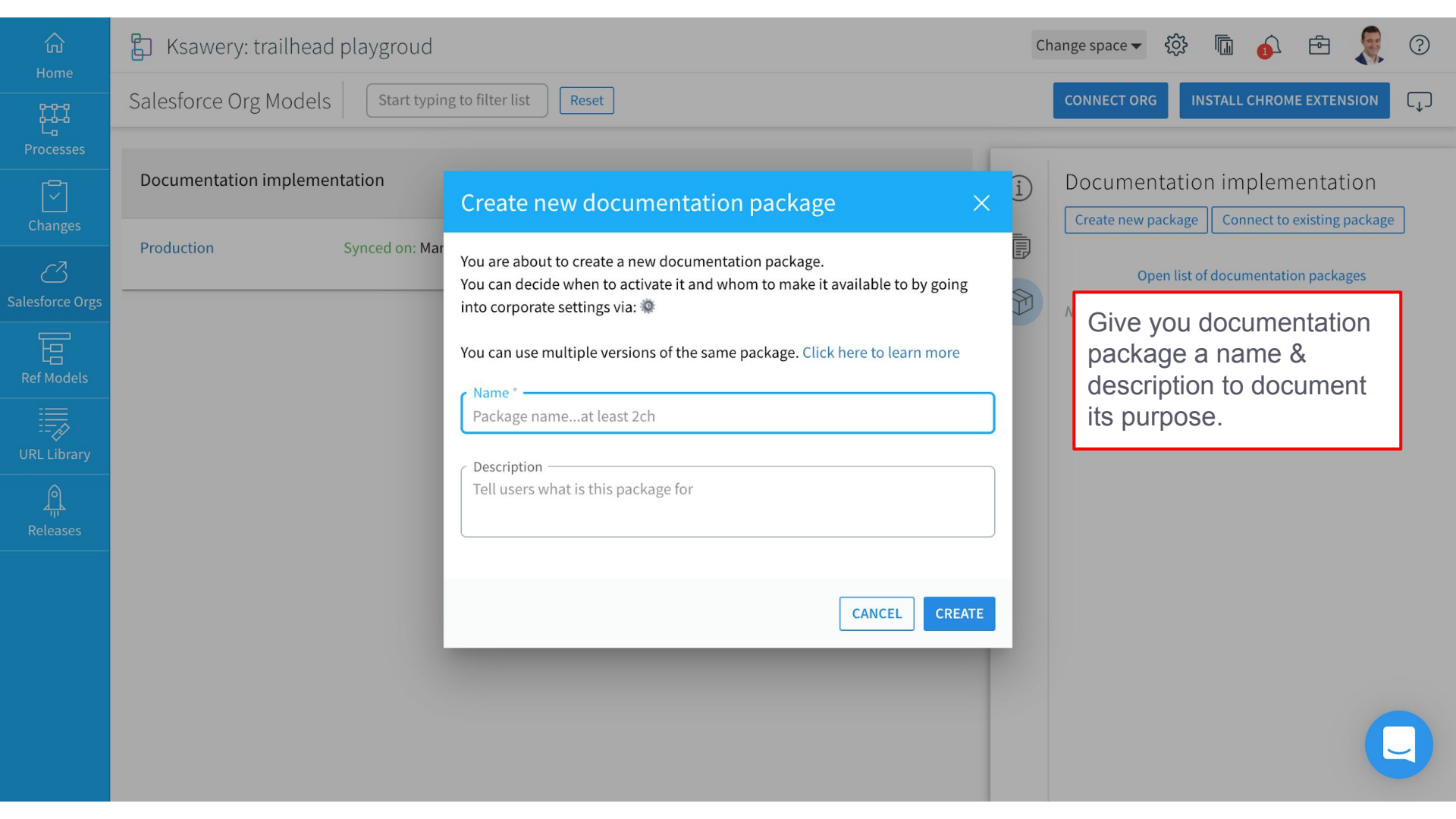
Documentation implementation

[Open list of documentation packages](#)

Either create a new documentation package or link to an existing one.

The latter option is recommended if you want to curate 2 version lines for the same package (for instance classic vs lightning version)





## Create new documentation package

You are about to create a new documentation package. You can decide when to activate it and whom to make it available to by going into corporate settings via: ⚙️

You can use multiple versions of the same package. [Click here to learn more](#)

Name \*

Package name...at least 2ch

Description

Tell users what is this package for

CANCEL

CREATE

Give you documentation package a name & description to document its purpose.

Home Processes Changes Salesforce Orgs Ref Models URL Library Releases

Ksawery: trailhead playground

Change space [gear icon] [document icon] [notification icon] [profile icon] [help icon]

Salesforce Org Models [Start typing to filter list] [Reset] [CONNECT ORG] [INSTALL CHROME EXTENSION]

Documentation implementation

Production Synced on: March 8, 2021 at 00:01 Ksawery Lisinski Production ● manage

Package name: Zenalpha managed package ...  
Author: Elements.cloud  
Created at: March 08, 2021 at 11:47  
Created by: Ksawery Lisinski  
Description: *No description provided*  
State: Not Activated  
Latest version: *No versions has been publish...*

Details of the created documentation package will be visible in the same tab in the right panel.